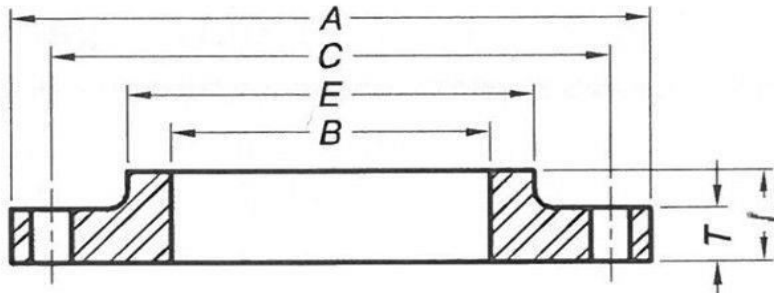


TABLE 4 AWWA C207 CLASS E HUB FLANGES



Nominal Pipe Size	O.D. Flange	Thick-ness	Overall Thickness	Diam. Of Hub	Bore	Drilling			Approx. Weight per Piece
						Diam. of Bolt Circle	Diam. of Bolt Holes	Number of Bolts	
NPS	A	T	L	E	B	C			LBS
4	9	0.938	1.312	5.312	4.57	7.5	0.75	8	13
5	10	0.938	1.438	6.438	5.66	8.5	0.875	8	14
6	11	1	1.562	7.562	6.72	9.5	0.875	8	17
8	13.5	1.125	1.75	9.688	8.72	11.75	0.875	8	28
10	16	1.188	1.938	12	10.88	14.25	1	12	37
12	19	1.25	2.188	14.375	12.88	17	1	12	59
14	21	1.375	2.25	15.75	14.19	18.75	1.125	12	78
16	23.5	1.438	2.5	18	16.19	21.25	1.125	16	101
18	25	1.562	2.688	19.875	18.19	22.75	1.25	16	110
20	27.5	1.688	2.875	22	20.19	25	1.25	20	139
22	29.5	1.812	3.125	24	22.19	27.25	1.375	20	162
24	32	1.875	3.25	26.125	24.19	29.5	1.375	20	197
26	34.25	2	3.375	28.5	26.19	31.75	1.375	24	235
28	36.5	2.062	3.438	30.75	28.19	34	1.375	28	269
30	38.75	2.125	3.5	32.75	30.19	36	1.375	28	303
32	41.75	2.25	3.625	35	32.19	38.5	1.625	28	375
34	43.75	2.312	3.688	37	34.19	40.5	1.625	32	401
36	46	2.375	3.75	39.25	36.19	42.75	1.625	32	452
38	48.75	2.375	3.75	41.75	38.19	45.25	1.625	32	528
40	50.75	2.5	3.875	43.75	40.19	47.25	1.625	36	573
42	53	2.625	4	46	42.19	49.5	1.625	36	648
44	55.25	2.625	4	48	44.19	51.75	1.625	40	688
46	57.25	2.688	4.062	50	46.19	53.75	1.625	40	733

48	59.5	2.75	4.125	52.25	48.19	56	1.625	44	799
50	61.75	2.75	4.125	54.25	50.19	58.25	1.875	44	827
52	64	2.875	4.25	56.5	52.19	60.5	1.875	44	922
54	66.25	3	4.375	58.75	54.19	62.75	1.875	44	1024
60	73	3.125	4.5	65.25	60.19	69.25	1.875	52	1253
66	80	3.375	4.875	71.5	66.19	76	1.875	52	1623
72	86.5	3.5	5	78.5	72.19	82.5	1.875	60	1922
78	93	3.875	5.375	84.5	78.19	89	2.125	64	2279
84	99.75	3.875	5.375	90.5	84.19	95.5	2.125	64	2586
90	106.5	4.25	5.75	96.75	90.19	102	2.438	68	3061
96	113.25	4.25	5.75	102.75	96.19	108.5	2.438	68	3432

Notes:

Hub flanges are to be used on pipe that has an OD equal to the nominal pipe size in the first column.
 *Pressure rating at atmospheric temperature is 275 psi. These flanges have the same OD and drilling as ANSI/ASME B16.1 class 125 cast-iron flanges. In sizes 24in. and smaller, they also match ANSI/ASME B16.5 class 150 standard for steel flanges. The thickness of a class 150 flange from which the raised face has been removed shall be no less than dimension T minus 0.06 in.

Dimensions are in inches. Weights are in pounds.